

DALLAS BIKE RIDE 2025

SATURDAY, MAY 17

EVENT



GUIDE

EVENT DETAILS AND THE HELPFUL INFORMATION TO GET YOU READY TO ROLL!



@dallasbikeride



hello@dallasbikeride.com



214-414-0381



Table of Contents

05 WELCOME

06 EVENT SCHEDULE

07 PACKET PICKUP

08 GETTING TO THE START

11 START LINE DETAILS

13 BIKE RENTALS

14 COURSE MAP

ALONG THE ROUTE 15

GETTING READY TO RIDE 16

RULES OF THE RIDE 17

FINISH FESTIVAL 19

GIVING BACK 21

OFFICIAL MERCHANDISE 22

PARTNERS 23



Dallas BIKE RIDE®



GET READY FOR THE 2025 DALLAS BIKE RIDE!



We're excited to welcome you to Dallas Bike Ride!

Today, riders from across the city and all over the United States will come together to celebrate the joy of bicycling.

Whether you're a seasoned cyclist or just starting out, there's a place for you here. Our ride presents a unique opportunity to experience the beautiful sights of our city in a whole new way—on safe, car-free streets! More than just a bike ride, it's a day of unforgettable memories with excitement around every turn.

Enjoy iconic landmarks, live, local music, delicious food, refreshing drinks, and a whole lot of good vibes. And, did you know that just by joining our ride you help support our partners at the Dallas Bicycle Coalition, Bike DFW, and Bike Friendly South Dallas to make bicycling more accessible and safer year round in the greater Dallas region?

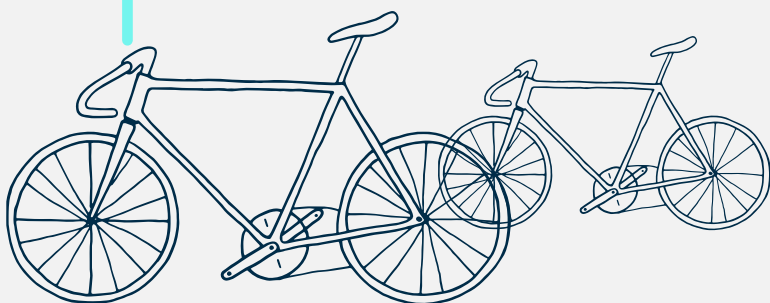
We'd like to extend our sincere gratitude to Mayor Eric L. Johnson, City Manager Kimberly Bizzor Tolbert, the Dallas City Council, the Office of Transportation and Public Works, the Dallas Police and Fire Departments, and all the incredible City agencies and offices whose collaboration makes this event possible.

We couldn't do it without you, nor without the support of our amazing sponsors, partners, and the hundreds of dedicated volunteers who make this weekend a joy for all.

And last but certainly not least, thank YOU for being here! We can't wait to see the joy on your faces as you become part of our growing community of riders who are transforming the way people view bicycling.

Stay safe, have a blast, and enjoy the ride!

The Dallas Bike Ride Team



EVENT SCHEDULE

PACKET PICKUP PARTY

FRIDAY, MAY 16

11:00 AM TO 7:00 PM

At The Rustic

3656 Howell St,
Dallas, TX 75204

**IF YOU ARE JOINING US ON MAY 17,
YOU MUST GET YOUR RIDER IDENTIFICATION
KIT (RIK) PRIOR TO THE RIDE DAY.**

Unless you selected **SHIPPING** (or **PREMIER SHIPPING**) as your **Delivery Method during sign-up**, we ask you to attend Packet Pickup to get your kit.

Packet Pickup will not be available on Saturday.

RIDE DAY

SATURDAY, MAY 17

6:00 AM • CORRALS OPEN

Start Line Location

1500 Marilla St, Dallas, TX 75201
Corrals can be accessed at the intersection of Young St. and S Akard St.

7:45 AM • CORRALS CLOSE

7:55 AM • NATIONAL ANTHEM

8:00 AM • RIDE BEGINS

8:30 AM • FINISH FESTIVAL BEGINS

8:45 AM • START LINE CLOSES

12:00 PM • FINISH FESTIVAL ENDS

Rider Identification Kit (RIK)

Riders must be wearing their RIK to participate in the Ride. Your bib number must be attached to the front of your shirt, and the helmet sticker must be worn on your helmet.

Make your bib number visible. After the ride, you will receive an email with the link to our photo album and can **use your bib number to find your photos.**



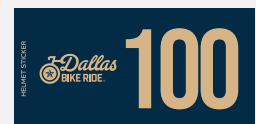
WATER BOTTLE

A Dallas Bike Ride 2025 Water Bottle will be given to all riders. You can get yours at Packet Pickup (Friday) or at the Finish Festival (after the ride).

GENERAL RIDER KIT



PREMIER RIDER KIT



Premier Riders enjoy special amenities and exclusive perks, including a **BIVO water bottle**, **cross-body bag**, and access to the **hospitality lounge**, after the ride.

PACKET PICKUP PARTY

ALL RIDERS MUST GET THEIR PACKET PRIOR TO EVENT DAY.

Unless you are a **Premier Pass** holder or purchased **SHIPPING** during registration, you **must attend packet pickup** to get your Rider Identification Kit (RIK) in advance.

WHEN

Friday, 5/16
11 AM to 7 PM

WHERE

The Rustic
3656 Howell St,
Dallas, Texas 75204

UPTOWN
DALLAS INC



Uptown Dallas is hosting our **Packet Pickup at The Rustic**, which is located within a **3-minute walk from the Cityplace/Uptown Station**.

At Packet Pickup, you'll **receive your water bottle and rider identification kit (RIK)**, which includes a paper bib number you must pin to the front of your shirt and a helmet sticker you must stick to the front of your helmet.

Stop by and celebrate your upcoming ride with entertainment and refreshments, **browse our partner offerings, get a FREE bike safety check** from our partners at **Bike Mart, p.** and gear up at our **Official Dallas Bike Ride Merch Sho**

For those who selected **PACKET PICKUP** as the delivery method at sign-up, this will be your **ONLY opportunity** to get your Rider Identification Kit.

**ALL RIDERS MUST HAVE THEIR RIK IN PLACE
TO ENTER THE START LINE CORRALS**

CAN'T ATTEND PACKET PICKUP?

SEND A PROXY TO GET YOUR RIK

If you didn't purchase Shipping during sign-up and cannot attend Packet Pickup, you **MUST send a proxy to get your RIK**.

You don't need to notify us about sending a proxy on your behalf. All we ask from your proxy is to show **a photo of your ID or confirmation number**.

No ID is required for riders under 18.

GETTING TO THE START

THE DALLAS BIKE RIDE START LINE IS LOCATED AT 1500 Marilla St, Dallas, TX 75201,
near City Hall and at the intersection of Young Street & S Ervay Street.



- **Start Line Corrals** are located on **Young St** (Premier, Advanced, and Intermediate) and **S Akard St** (Beginner) and can be **accessed from S Field St, S Akard St, and Marilla St**.
- The best time to arrive at the Start Line area is before 7 AM, but please plan to **arrive at the corrals entrance no later than 7:30 AM** in order to be in your preferred corral by 7:45 AM.
- Routes in the **drop-off zone highlighted in the map** should be open during Dallas Bike Ride, but all road closures are subject to change at the discretion of public safety officers.

FOR ROAD CLOSURES & NO-PARKING ZONES, VISIT [DALLASBIKERIDE.COM/ROAD-CLOSURES](https://dallasbikeride.com/road-closures)

Make sure to **plan your trip to the Start Line ahead of time** for a stress-free morning!

PARKING RECOMMENDATIONS

Both the Start and Finish Lines are located near City Hall, **1500 Marilla St, Dallas, TX 75201.**

One of our go-to parking options is the **Convention Center Parking Garage, which offers 1,343 spots** and is located just a half mile from our start line.

You can explore our **parking recommendation map, available on our website,** to choose from parking options available in the area in the morning of the ride.

Don't forget to **check our Road Closures table to plan your route to the Start Line** area as well as to your preferred parking garage.

USING DART

There are several DART train stations close to our Start Line area start at City Hall Plaza, including the **Convention Center Station, Union Station, West End Station, and Akard Station.**

Planning to use DART? **Visit their Trip Planner Map at [dart.org](https://www.dart.org)** to check hours of operation and travel time from your departure location to the Start Line.

RIDE-SHARING

Riders getting a ride or using ride-sharing services should **select areas along our drop-off zones** as their destination. Choose a spot on Wood St or Canton St, between S Griffin St and S Saint Paul St.



Stop by the TREK tent at the event to grab a \$20 off gift card to redeem at your local TREK DFW store!

UPTOWN DALLAS

A DISTRICT **WE** MAINTAIN,
A COMMUNITY **YOU** EMBODY.

UPTOWN
DALLAS INC.

www.uptowndallas.net


BIKE MART

FREE SAFETY CHECK

COME IN BEFORE MAY 17TH
& WE'LL MAKE SURE YOU'RE RIDE READY

- ✓ chain tension
- ✓ tire pressure
- ✓ brakes
- ✓ shifting
- ✓ cables secured

GET \$**10** OFF

PURCHASE OF \$25+

PROMO CODE: KICKSTAND10

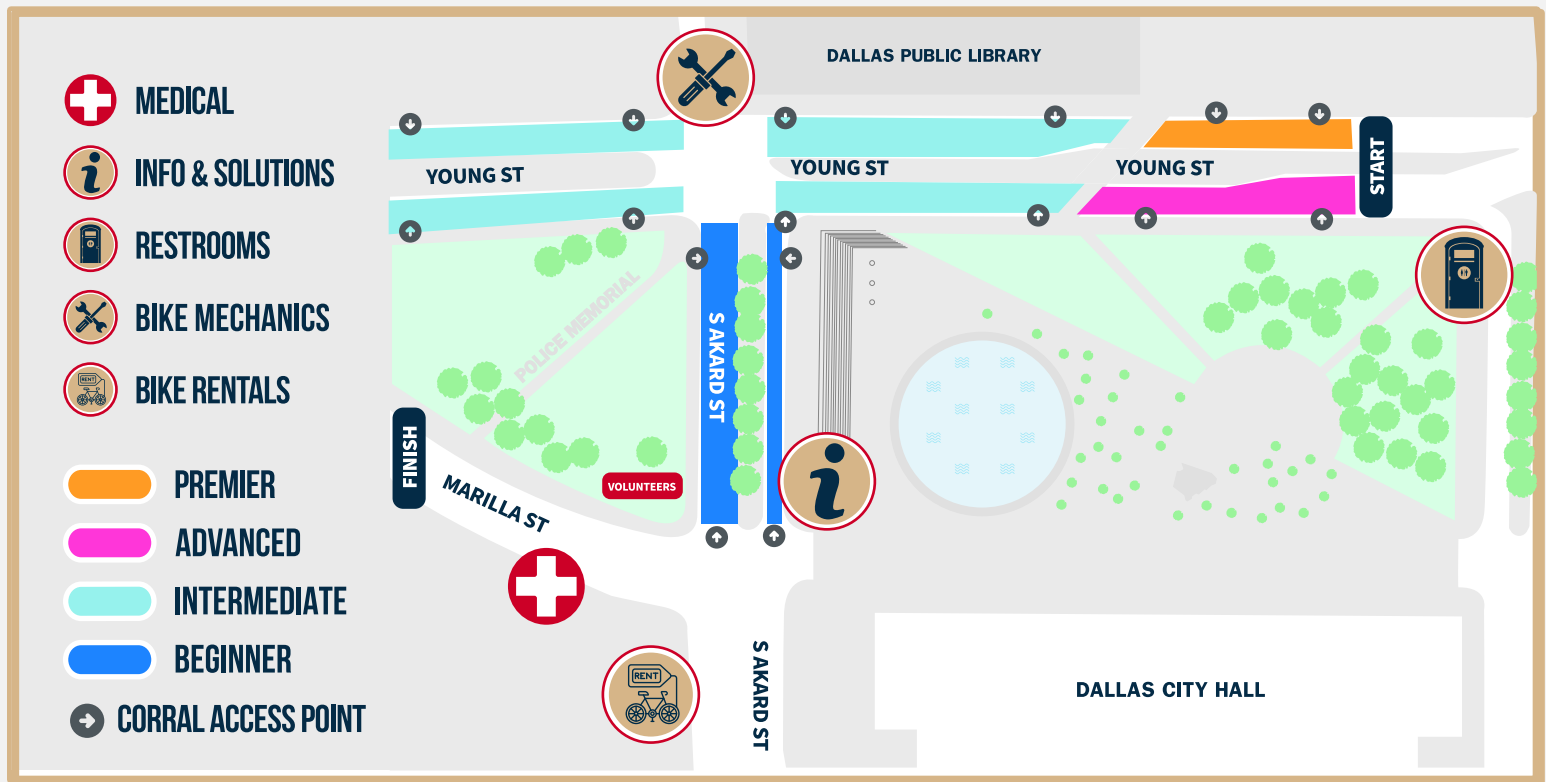
EXPIRES: AUG. 31ST 2025

BIKEMART.COM



START LINE DETAILS

At the **Start Line area, on Young St. between S Field St. and S Ervay St.**, you will see corral entrance signs that read **BEGINNER, INTERMEDIATE, ADVANCED, and PREMIER**. These signs designate the corrals where you will line up and reflect the different biking ability levels. Regardless of what you selected during registration, the start corrals are self-seeding, meaning you can choose any corral upon arrival.



- Please do not switch corrals, and allow some space between participants while lined up inside your preferred wave. The **Premier corral will be released first, followed by Advanced, Intermediate, and then Beginner.**
- **Portable restrooms will be available** in the area indicated in the map, and **Bike Mart** will be assisting riders with final **safety checks**.
- Don't be late, participants must be in their corrals by 7:45 am, and **the Start Line closes at 8:30 am** – after that, access to the course is no longer permitted.

Riders who are **DEAF OR HARD-OF-HEARING** are welcome to meet at the **Start Line Stage** (near the star symbol), where there'll be an interpreter. Riders in this group do not need to enter the corrals. For other accommodations, please email us at **HELLO@DALLASBIKERIDE.COM**

Dallas BIKE RIDE®



BIKE RENTALS

RENTAL PICKUP DETAILS

Where: At the Unlimited Biking tent located at S Akard St, between Marilla St and Canton St.

When: Saturday, May 17, from 6 am to 7 am.

*Return your bike rental at the same location after the ride.

NO BIKE? NO PROBLEM!

Our **Rent & Ride** program offers your Ride Pass bundled with **bike and helmet rentals for ride day**.

Rentals can also be **reserved during sign-up until Tuesday, May 13th**, by riders who select other ticket types.

After May 13th, riders can book directly with Unlimited Biking at



RENTAL PICKUP DIRECTION

- 1** Present your **Dallas Bike Ride and bike rental confirmation + a photo ID** at the Bike Rental Pickup tent to get your bike and helmet.
- 2** You will **receive a helmet and bike** for each rider with a rental package in your order.
- 3** Feel free to **request assistance to adjust the bike/helmet fit or to install clip-in pedals** - in this case, please bring your pedals, and we'll be happy to install them on your rental bike.

IMPORTANT INFORMATION

- **Each rider on the reservation must be present** at the time of pickup. Bikes will not be handed out until all members of the party are present and accounted for.
- Rental packages come with **one bike with standard flat pedals and one complimentary helmet**.
- If you have any **questions about your rental package** contact Unlimited Biking directly.

→ sales@unlimitedbiking.com

→ 212-749-4444



OFFICIAL COURSE MAP



*COURSE SUBJECT TO CHANGE

**METHODIST DALLAS
FINISH FESTIVAL**
at City Hall Plaza

KEY

- START LINE
- ENTERTAINMENT
- FINISH LINE
- REST STOPS
- BIKE ROUTE
- MEDICAL
- MILE MARKERS

A 10-MILE ROUTE WILL ALSO BE AVAILABLE.
SIGNAGE NEAR MILE 9 WILL INDICATE THE
ENTRANCE TO THE SHORTCUT.

ALONG THE ROUTE

REST STOPS, RESTROOMS, AND MEDICAL

Fully stocked rest stops with water, fruits, and snacks will be available along the route on **miles 5.8, 10, and 15.**

Portable toilets are available at all **rest stops, start line, and finish festival.**

Our **main medical hub** will be placed **by the Finish Line.** Ask any volunteer, staff member, or police officer if you need medical assistance.

SAG AND MOBILE MECHANIC

SAG vehicles provide **transportation to the Finish Line for riders who need assistance** or are behind 6 MPH.

Mobile mechanics will be at the Start Line area and on-course to assist riders during the event. If you get a flat tire or have a mechanical issue, look for a Mobile Mechanic.

ASSISTANCE AND EMERGENCIES

If you need assistance, medical attention or if your bike has a major mechanical issue, and you need transportation to the Finish Festival, contact our Ride Support Staff during the ride at **(214) 414-0381. In case of critical medical emergency, call 911.**

Refueling you at the rest stops!

Use Code

ABRDALLAS20

for 20% OFF

your first order at KatesRealFood.com

A cyclist wearing a green jersey and orange shorts is riding a mountain bike on a trail. The sun is low on the horizon, creating a warm glow. In the foreground, a large KATE'S REAL FOOD Protein Bar is shown. The bar is labeled 'PEANUT BUTTER BROWNIE PROTEIN BAR' and '15g PLANT BASED PROTEIN'. It also features a 'USDA ORGANIC' logo and 'GLUTEN-FREE & SWEETENED WITH HONEY'. The bar is wrapped in a yellow and black wrapper with 'KATE'S REAL FOOD' and 'LEMON COCONUT' visible.



KatesRealFood.com

Terms & Conditions: Applies to one-time purchases. Minimum purchase of \$25.00. One use per customer. Can't combine with other discounts.

GETTING READY TO RIDE

RIDE-DAY CHECKLIST

- ✓ **Weather-appropriate clothing.**
The event will take place rain or shine.
- ✓ **1-2 filled water bottles** and hydrate often during the ride.
- ✓ **Helmet** (mandatory).
- ✓ Your **RIK** (mandatory).
- ✓ **Bike Lock** to park your bike at the Bike Parking at the Finish Festival.
- ✓ **Photo ID + cash and/or credit card** to purchase snacks and merch at the Finish Festival.
- ✓ Fully charged **cellphone**.
- ✓ **Sunscreen** and **Sunglasses**.

BEFORE THE RIDE

Plan your trip to the Start Line in advance. Check travel time and reserve parking in advance.

Check your bicycle prior to the event to ensure you have air in your tires, working brakes, and any quick releases tightened.

RIDING WITH KIDS AND TEENS

Children under the age of 3 are NOT allowed on the ride.

Kids (ages 3-7) must ride with an adult on a tandem bike, in a child's seat, on a tag-along bike or in a bike trailer.

Youth riders (ages 8-17) must participate in the event with an **adult riding in closing proximity** the entire event.

RIDING AS A GROUP/TEAM

Pick a **meeting spot** at the Start Line area prior to entering the ride corrals.

Make sure you and others in your group have stored important **contact info**.

If you get separated from your group, continue to the next rest stop and look for them there.

For safety, do **NOT** pull over to the side of the road to wait for them.



RULES OF THE RIDE

- 1 WEAR YOUR HELMETS!** Helmets are mandatory and required to participate in the ride. If you're not wearing a helmet, you will not be permitted to join the ride.
- 2 HAVE YOUR RIDER IDENTIFICATION KIT (RIK) VISIBLE** at all times. Affix your bib to your shirt and helmet sticker on the front of your helmet. You may be asked to leave the ride if elements of your RIK are missing.
- 3 RESPECT OTHER CYCLISTS AND KEEP A SAFE DISTANCE** between yourself and others around you.
- 4 DO NOT RIDE AGAINST THE FLOW, NOR STOP IN THE MIDDLE OF THE ROAD.** Move completely to the side of the road (right side) and look for a safe place before stopping along the route.
- 5 DO NOT WEAR EAR BUDS OR HEADPHONES.**
- 6** Keep at least **ONE HAND ON THE HANDLEBARS** at all times.
- 7 BE PREDICTABLE AND RIDE IN A STRAIGHT LINE.** Keep to the right side of the roadway when riding and pass other riders on the left side of the roadway. **Call out "passing on your left"** if you have to pass slower riders closely and use hand signals when slowing down, stopping, turning or changing lanes.
- 8 DO NOT USE YOUR PHONE** while biking. If you wish to take pictures during the ride (which is highly encouraged), pull over to the side of the road so other riders don't get blocked. Share your photos on social media and tag **@DallasBikeRide**
- 9 CONTROL YOUR SPEED** and be ready to slow down for congestion or road hazards.
- 10 E-BIKE POLICY:** The Ride welcomes class 1, 2 and 3 e-bikes. Riders must comply with the speed limit of 18 mph and are not allowed to exclusively use the motor without pedaling for an extended period of time.



Make
Downtown
Dallas
your
playground.



Shop.
Dine.
Explore.

Proud sponsor of 




DOWNTOWN
DALLAS INC

Check out all there is
to see and do at
DowntownDallas.com



Here to help you get a move on.

At Methodist Dallas Medical Center, we're here for all your orthopedic needs – no matter what life throws your way. Whether it's the years or the miles that have caught up to you, our dedicated care team is ready to help. From emergency care to managing aches, pains, and chronic injuries, we offer:

- **Advanced Imaging**
- **Nonsurgical and Surgical Treatment Options**
- **Physical Therapy**

Providing our friends and neighbors with the patient-focused orthopedic care they depend on. That's community and why so many people **Trust Methodist.**



For more information, visit us at
[MethodistHealthSystem.org/Dallas](https://www.methodisthealthsystem.org/Dallas)
or call **469-946-8849**

Texas law prohibits hospitals from practicing medicine. The physicians on the Methodist Health System medical staff are independent practitioners who are not employees or agents of Methodist Dallas Medical Center, Methodist Health System, or any of its affiliated hospitals. Methodist Health System complies with applicable federal civil rights laws and does not discriminate on the basis of race, color, national origin, age, disability, or sex.

KEEP THE PARTY GOING

Cross the finish line and enjoy the Dallas Methodist Finish Festival, with **food trucks, music, and fun activities** with local vendors and partners.

FESTIVAL HIGHLIGHTS & ACTIVITIES

- **Premier Lounge** available to Premier Pass holders, with food and beverage.
- Dallas Bike Ride **Merchandise Store**.
- Beverage Garden with **Deep Ellum Brewing** and **Lightstrike** (credit card only).
- Photo moments + opportunities.
- **Kids Zone** with activities to entertain the whole family.
- Stretching Sessions on stage with **Methodist Dallas Medical Center**.

WHEN

Saturday, 5/17
8:30 AM – 12:30 PM

WHERE

City Hall Plaza
1500 Marilla St,
Dallas, TX 75201

BIKE PARKING

Bring your bike lock! Privately-secured **Bike Parking will be available near the Finish Festival entrance**. Lock your bike and enjoy the Festival with peace-of-mind. Bike Parking is first-come, first-serve.

FOOD & BEVERAGE

Grab some snacks after your 20 miles! **Enjoy a cold beverage** and don't miss the awesome lineup of **local food trucks** serving delicious bites!





MORE BUTTS ON BIKES!

EDUCATE. MAINTAIN. RIDE.
Bicycles are beautiful tools for teaching.

WWW.BIKEFRIENDLYSOUTHALLAS.ORG



Join Dallas Bicycle Coalition

**Advocate for better bike
infrastructure**

Connect with fellow cyclists

**Support a more bike-
friendly Dallas!**

Únete a la Dallas Bicycle Coalition

**Pelea por mejorar la
infraestructura ciclista**

Conéctate con otros ciclistas

**¡Apoya para crear un Dallas
más amigable para las
bicicletas!**

dallasbicyclecoalition.org/signup



GIVING BACK

When you join **Dallas Bike Ride**, you're not just pedaling for fun
– you're **supporting bike safety and accessibility for all!**

A portion of your registration fee goes directly to the **Dallas Bicycle Coalition, BikeDFW, and Bike Friendly South Dallas**, who all work towards making cycling in Dallas safer and encouraging more people to engage in bicycling.



These local organizations are doing amazing work **empowering our community to build healthy habits, leadership, and independence through the sport of cycling.**

But that's not all. In the spirit of inclusivity, we also promote the Sponsor-A-Rider program, which **covers the participation cost for riders who would otherwise not be able to join the ride.**

LEARN MORE ABOUT OUR GIVING BACK INITIATIVES AT [DALLASBIKERIDE.COM/COMMUNITY-IMPACT](https://dallasbikeride.com/community-impact)



OFFICIAL MERCHANDISE

WEAR YOUR LOVE FOR BICYCLING + DALLAS BIKE RIDE ON YOUR SLEEVE!

Shop for Dallas Bike Ride gear at the Official Merchandise Shop at Packet Pickup and Finish Festival. Our retail partners have a great selection of men's, women's and kids' t-shirts, cycling jerseys, jackets, and more.



VISIT [BIKERIDESHOP.COM](https://www.bikerideshop.com) TO SEE THE FULL LINEUP!



OFFICIAL
JERSEY

NOTE If you purchased merchandise online after 4/30 or need to process a size exchange, please visit the DBR Merchandise Shop.

WITH **12+** AREA SPORTS TEAMS, **70+** SPORTING
EVENTS ANNUALLY, AND **FANS LIKE YOU...**
IT'S EASY TO **WIN IN DALLAS.**

**BIG WINS
HAPPEN HERE.**



Learn more about the Dallas Sports Commission at
DallasSports.org

THANK YOU TO OUR PARTNERS

OFFICIAL PARTNERS



TREK



CELEBRATION PARTNER

Methodist
DALLAS MEDICAL CENTER



SUPPORTING PARTNERS



VARLO



FOUNDING PARTNERS



COMMUNITY PARTNERS

